

Warm, brown-based neutrals are the foundations of Japandi schemes. Pair with soft blacks and earthy green accents – choosing darker wooden flooring and woodwork to create contrast.

Pampas – Warm Off-White



# Japandi



**Pampas**  
Warm off-white



**Good Intentions**  
Pale greige



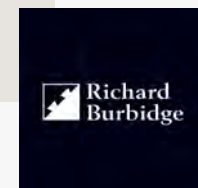
**Sunday Soul**  
Warm greige



**The Record Store**  
Soft pure black



**Nomad**  
Dark olive green





# Rustic Vogue

This versatile blue palette has subtle purple undertones that knock the harsh coolness out. Use warmer neutrals shades for pairing, and decorative organic wood to create a luxurious feel with textural contrast.

Mr. Clifton - Teal  
Mid-Blue



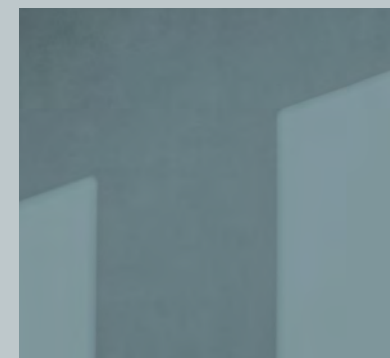
**Low Salt**  
Cool off-white



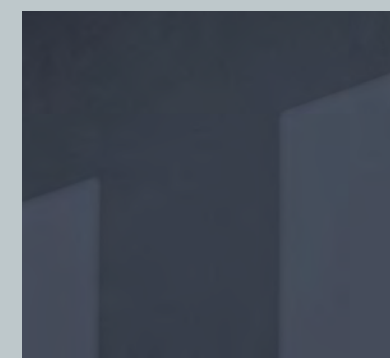
**Sweatpants**  
Pale grey



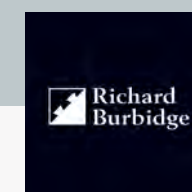
**Lie In**  
Pale grey blue



**Mr Clifton**  
Teal mid blue

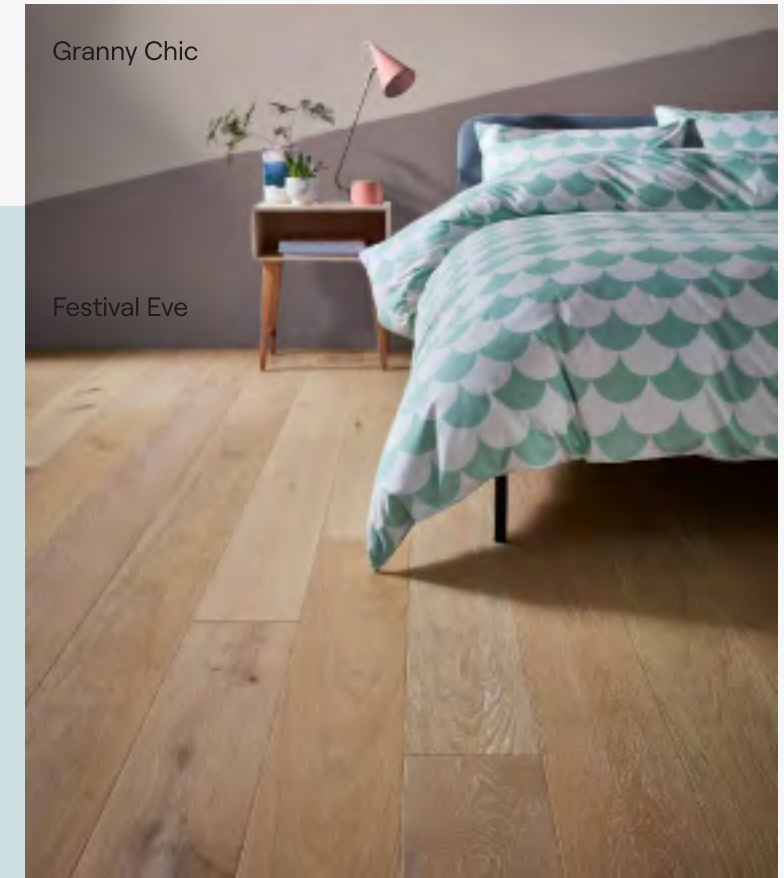


**2AM**  
Dark blue

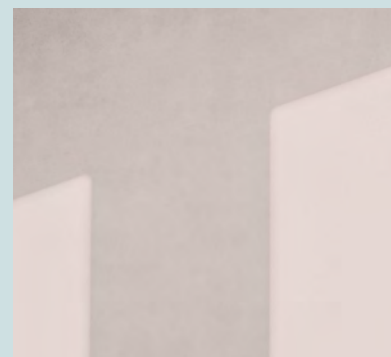


# Vivid Zonal

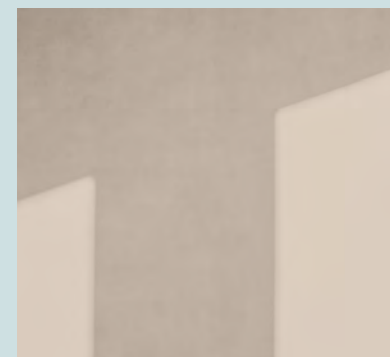
Whether the pops come from furniture, flooring, or paint colours – Vivid Zonal look is about peppering bold colours through more muted base palettes. You want about 10-20% bold colour. Think pale oak or lime flooring, with hushed tones on the walls, and accent with painted shapes or furnishings.



**Detox**  
Pale dusty green



**Granny Chic**  
Grubby pale pink



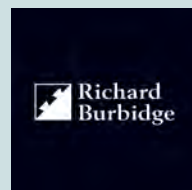
**Pudding**  
Dark beige



**Pool House**  
Vibrant blue green



**Festival Eve**  
Dark reddish purple





Think deep, pigment-rich colours for your Regal Revival scheme. From heavily saturated teals and yellow shades, to more muted but deliberate pinks – embracing bolder colours for wood panelling and carpentry creates a super luxe feel. Consider a single feature wall, framing a fireplace or focal point, if your space isn't well lit.

# Regal Revival



The Old Corset Factory  
- Deep Rust Red



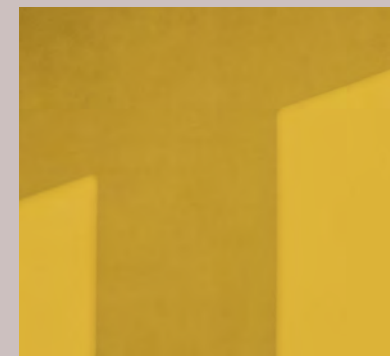
**Ciao Sofia**  
Grubby pink



**Hamilton**  
Pale dusty teal



**The Drink**  
Dark green blue



**Moritz**  
Grubby dark yellow



**The Old Corset Factory**  
Deep rust red

