

# 2022 Interior Trends Insight

By Richard Burbidge



# Outside In

**Texture | Sustainability | Imperfections | Raw |  
Harmony | Handcrafted | Rustic | Serene**

Outside In is a response to consumers increased desire for physical connections, bringing a textile revolution. The focus is on textured materials to engage the senses.

Imperfections are celebrated incorporating locally handcrafted or re-purposed materials into the space. Moving away from mass production, shopping second-hand shows no signs of stopping in 2022, while being environmentally friendly, it also creates a more unique aesthetic.

Outside In looks to incorporate raw woods and soft textures, with a hint of sleek design and modernist touches like wall cladding. Timbers with natural characteristics contribute towards the raw aesthetic.





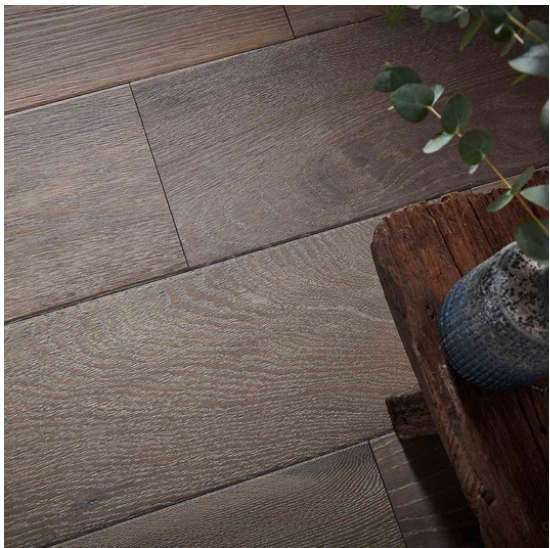
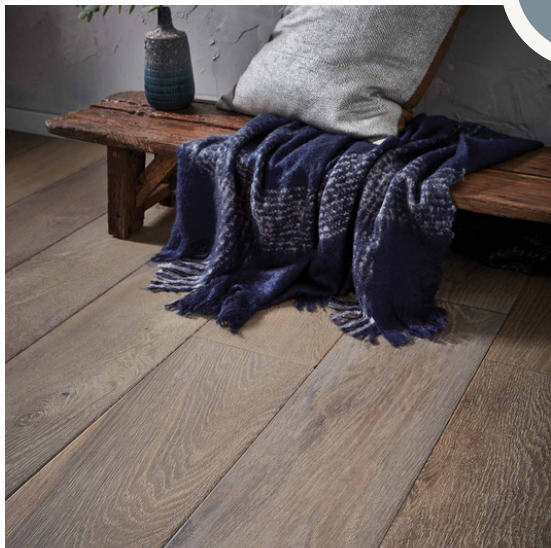
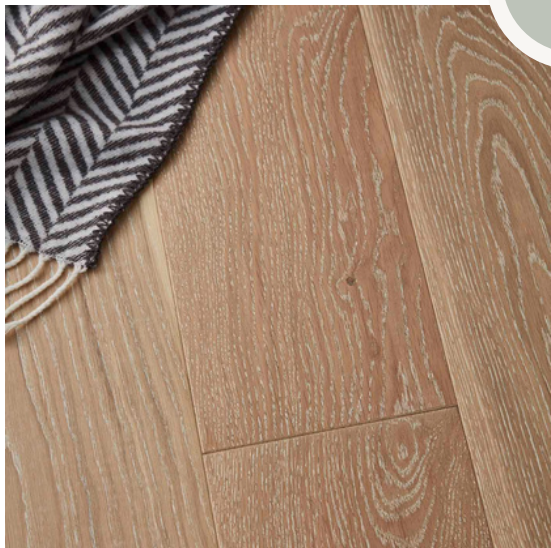
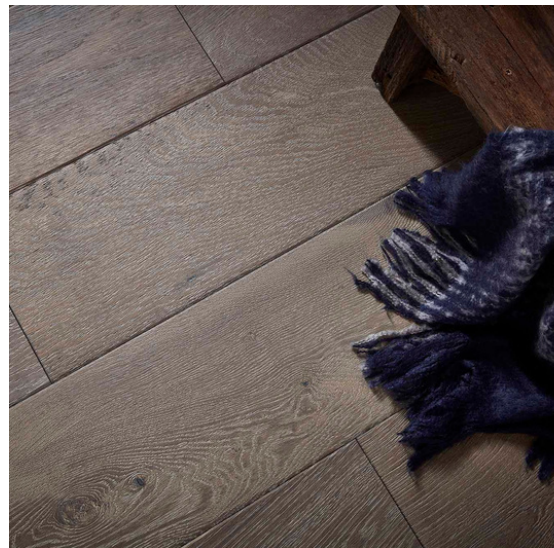
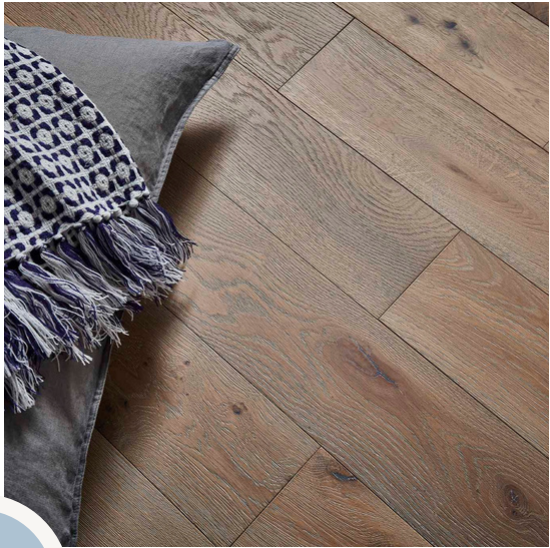
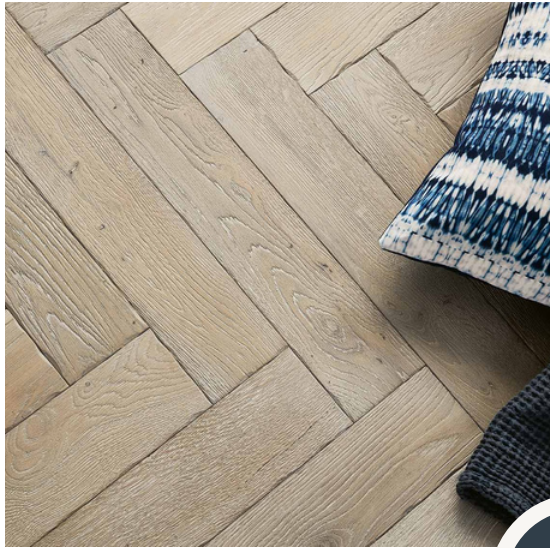
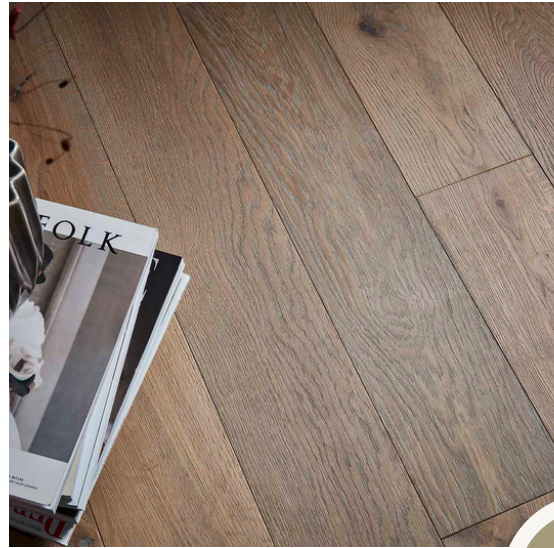


Photo credit: Atkinson & Kirby, Richard Burbidge, Pinterest, Unsplash.

Wall Cladding | Certified Timber | Baby Breath Flowers | Textured Fabrics | Washed Tones | Handcrafted Decor



# Zen Living

**Biophilia | Self-Care | Greenery | Natural Light |  
Tranquility | Sleek | Mindfulness | Simplicity**

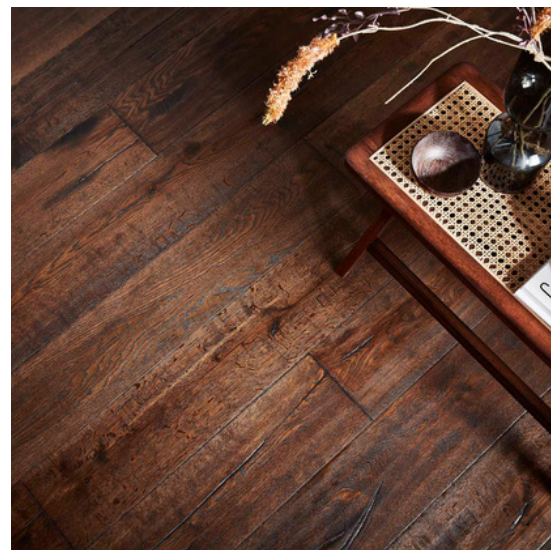
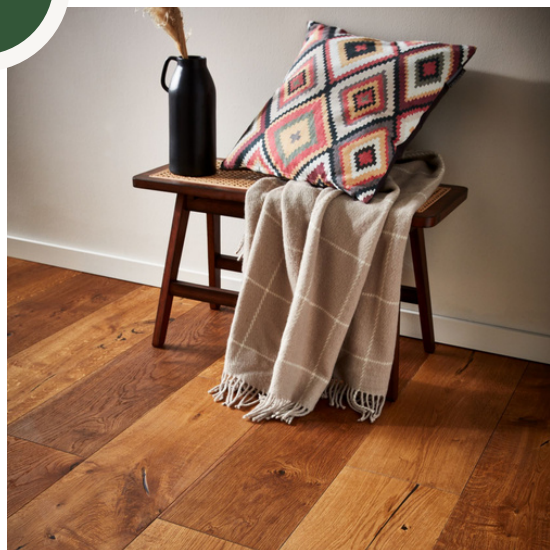
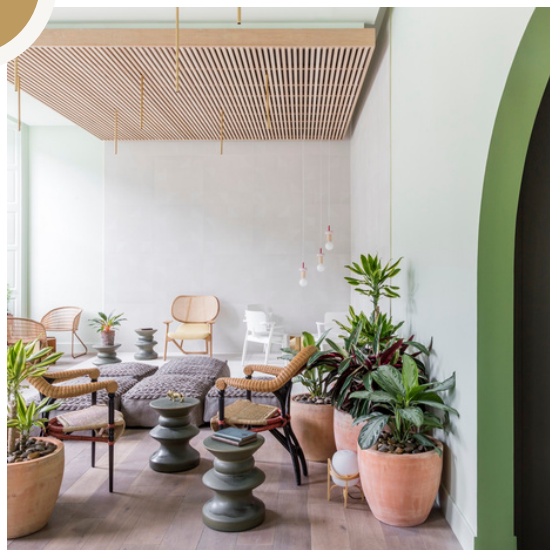
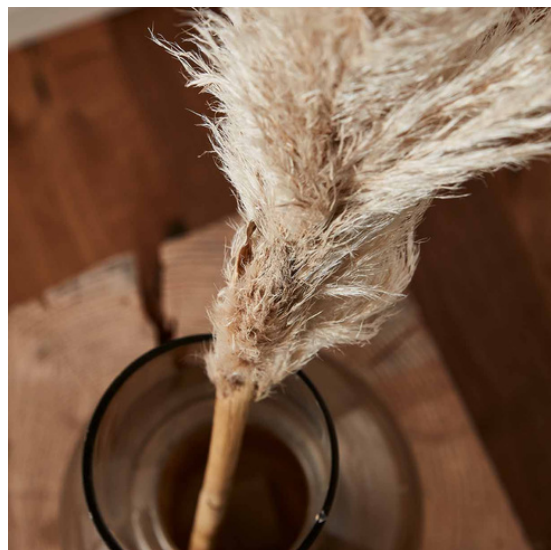
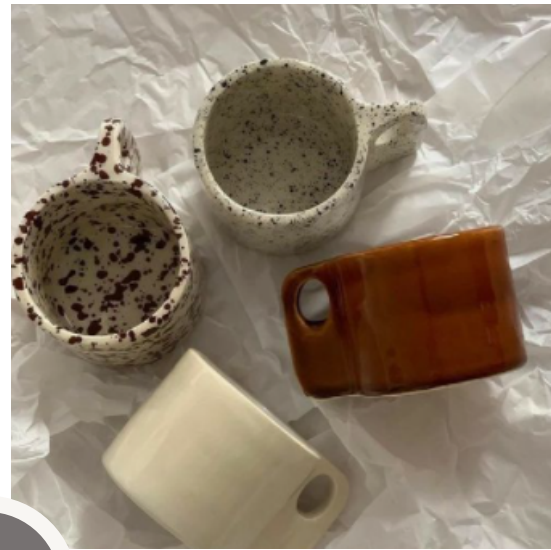
The importance of health and wellbeing is incorporated into the home with a continued focus on the home as our sanctuary.

Timber and greenery is used throughout the decor to improve air quality and respiratory health. Plants are an integral part of a tranquil space as they're the ultimate stress reliever.

Sustainability is at the forefront of this trend, appealing to those looking for a self-sustaining way of life. The focus is on investing in quality materials that are built to last. Environmentally certified timber is key to creating a biophyllic inspired space.







**Glass | Wall Cladding | Pampas | Greenery | Smoked Oak | Tactile Ceramics**

Photo credit: Atkinson & Kirby, Richard Burbidge, Pinterest, Unsplash.



# Maximalism

**Eclectic | Grandeur | Thrifting | Regency |  
Retro | Connection | Creativity | Nostalgia**

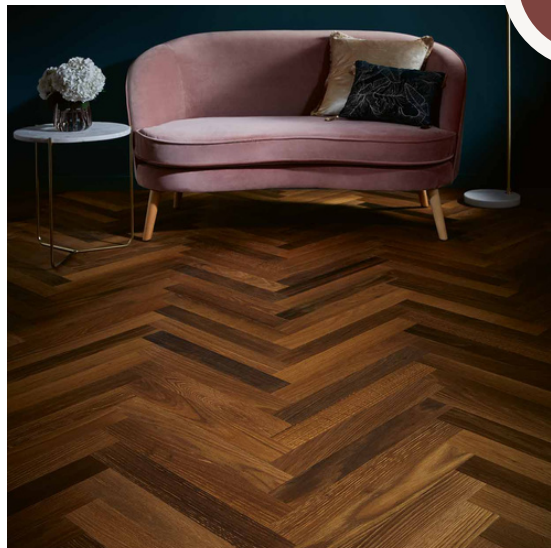
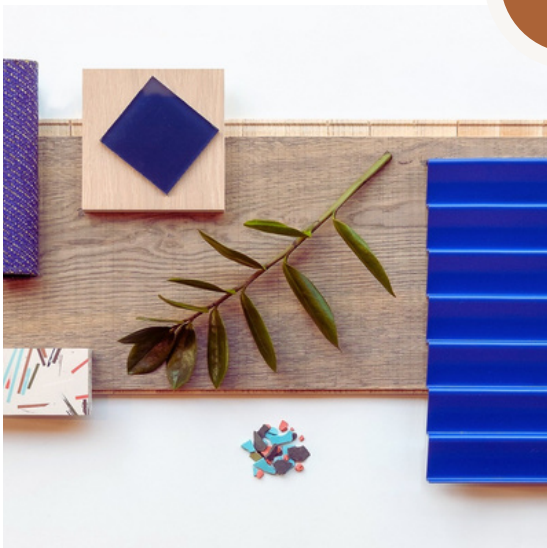
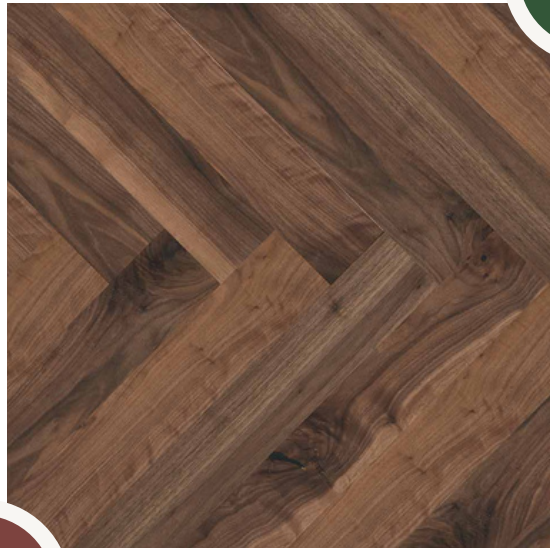
Maximalism is back, transforming the space into a place for self-expression and nostalgic grandeur.

Gone are the days of grey walls, maximalism encourages bold colours, paired with wall panelling. The retro colour palette includes true greens, deep blues, muted burgundy and an orange pop of colour.

With retro influences at the forefront, decor is influenced by the arts and crafts movement. A key feature of the maximalism trend is thrifting and antiques, adding one of a kind unique decorations to the space.







Parquet | Rich Toned Timber | Bold Colours | Unique Decor | Abstract Art | Panelling

Photo credit: Atkinson & Kirby, Richard Burbidge, Pinterest.



# Bright Future

**Multi-functionality | Futuristic | Neon | Zoning |  
Energetic | Material Innovation | Bright | Nostalgia**

This trend blends futuristic technology with a nostalgic retro sci-fi aesthetic. Create a space that balances smart technology while incorporating design elements that allow you to switch-off and unwind.

Brighten up the interior environment with the use of colour blocking, floor zoning and bright lights. The trend focuses on muted flooring to serve as the ideal foundation to enhance loud decors. Opting for clean timbers with minimal knots and glass panels to create a seamlessly clean space.

This trend takes advantage of technological advancements, incorporating digital elements into the space to streamline the home and make your life easier. Material innovation is a focus, like easy to fit components making for easier and quicker installations.





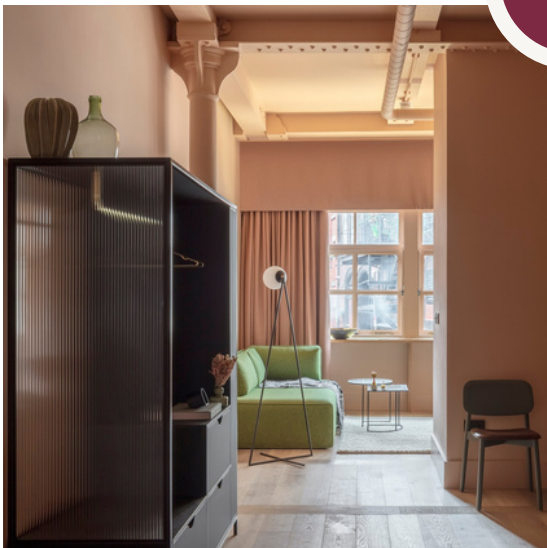
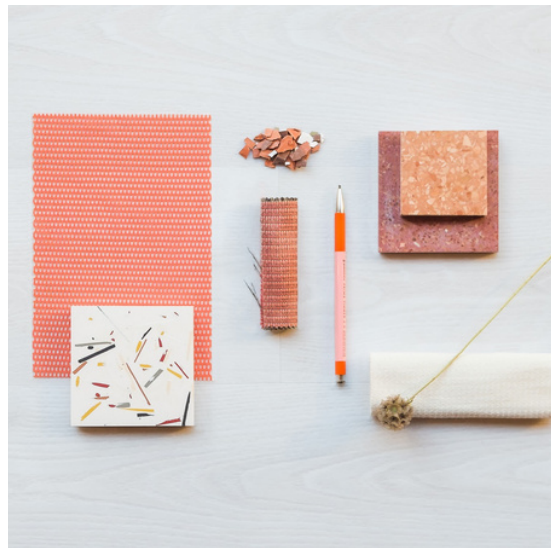
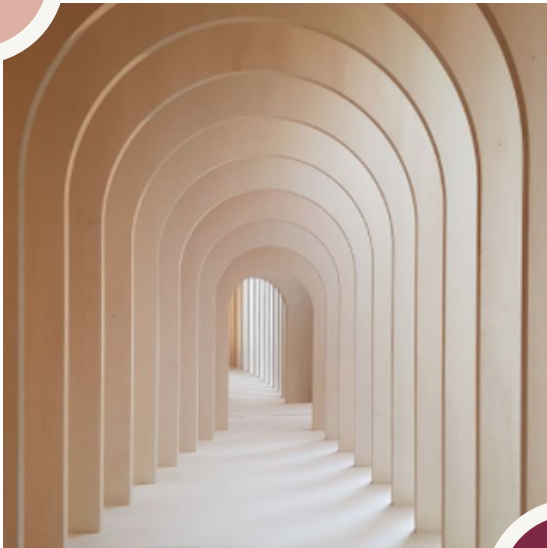


Photo credit: Atkinson & Kirby, Richard Burbidge, Pinterest.

**Bright Lights | Glossy Lacquer | Zoning | Colour Play | Wall Cladding | Glass**



# About Us

**Quality | Heritage | Expertise | Trend-Led**

Richard Burbidge is the UK's leading manufacturer and supplier of stairparts, timber mouldings and outdoor decking balustrade.

Established in 1867, we've been passionate about the design, manufacture and supply of timber products for over 150 years. We offer a range of innovative products designed to transform your home.

Our products are designed to be simple to fit, with a team of experts to advise on every aspect of planning, estimating and fitting as required.

**DOWNLOAD A BROCHURE**





